

W
ENGAGING THE
COMMUNITY
L
E

in Preparedness, Response and Recovery

Conference Schedule – At a Glance

Time	Location	Event / Topic
8:30 AM - 9:00 AM	Windsor Ballroom	Registration, Breakfast & Exhibitors
9:00 AM - 9:30 AM	Windsor Ballroom	Welcome, Introductions & Acknowledgments
9:30 AM - 10:15 AM	Windsor Ballroom	Keynote Address
10:15 AM - 10:30 AM	Windsor Ballroom	Break, Networking & Exhibitors
10:30 AM - 11:45 AM	Room F	Asset-Based Community Development
	Room C	Engaging People with Disabilities and Access & Functional Needs in Preparedness, Response & Recovery
	Room D	Incorporating Resiliency Strategies in Response & Recovery
	Room A	Something for Everyone - Whole Community Volunteer Approach
	Room E	Who's at the Table - Building a Multi-Agency Resource Center for the Whole Community
11:45 AM - 12:30 PM	Windsor Ballroom	Lunch, Exhibitors & Networking
12:30 PM - 1:30 PM	Windsor Ballroom	Plenary Presentation: Active Shooter - From Pathway to Violence to Road to Recovery
1:30 PM - 1:45 PM	Windsor Ballroom	Break, Networking & Exhibitors
1:45 PM - 3:00 PM	Room E	2018 Threat Assessment & Mitigation Strategies
	Room F	Building Capacity and Funding to Support Preparedness, Response & Recovery
	Room D	Congregate Sheltering for the Whole Community
	Room C	Disability Inclusion: Understanding & Engaging the Disability Community
	Room A	Rebuilding Right the First Time
3:00 PM - 4:00 PM	Windsor Ballroom	Networking Reception (with Drawings & Closing Remarks)

*This conference was made possible through the generous support of the **Department of Human Services** and our Conference Sponsors: Islamic Relief USA, NJ 2-1-1, NJ Climate Adaptation Alliance, NJM Insurance Group Robert Wood Johnson Foundation.*



Keynote Address – 9:30 AM – 10:15 AM

Jared Maples was sworn in as Director of the New Jersey Office of Homeland Security and Preparedness (NJOHSP) on January 16, 2018. In his role, he serves as the federally designated Homeland Security Advisor (HSA) to the Governor and is the Cabinet-level executive responsible for coordinating and leading New Jersey's Counterterrorism, Cybersecurity, and Emergency Preparedness efforts. Director Maples joined NJOHSP in January 2016 as Director of the Division of Administration. The Division of Administration encompasses all information technology and security, human resources, facilities management, and financial activities for the Office, including oversight of millions of dollars in federal homeland security grant funding.

Prior to joining NJOHSP, Director Maples spent over a decade at the Central Intelligence Agency (CIA) in a variety of leadership roles and previously worked at the US Department of Defense in the Office of the Secretary of Defense. As a seasoned intelligence officer, his career focused on executive strategy development and execution, organizational and operational change management, emergency operations response, internal security investigations and personnel protection in high threat environments. Director Maples was fortunate to travel around the world on behalf of the US Government, including many deployments to areas of active hostilities.

Director Maples holds an MBA from Georgetown University, a Bachelor's degree from Villanova University, and an Associate's degree from Valley Forge Military College.



Breakout Sessions - 10:30 AM - 11:45 AM

Asset-Based Community Development – Room F

The Asset-Based Community Development methodology invests in the sustainable development of communities based on their strengths and potentials. Disasters begin and end in communities, which makes this an ideal model for building more resilient communities. Recommended for ALL.



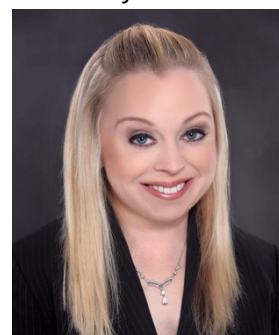
Keith Adams is a Partner in Response and Resilience for Episcopal Relief and Development. In this role he works with dioceses throughout the United States, assisting them in organizing their disaster preparation, response, and recovery in disasters. Since 2013, Keith has served as Coordinator for The Episcopal Church in NJ Superstorm Sandy Recovery Program, a partnership program with Episcopal Relief and Development and the Episcopal Dioceses of New Jersey and Newark. He has served as a member of the New Jersey Department of Human Services Disaster Case Management Advisory Board, New Jersey Housing Task Force, Statewide Community Recovery Team, Southern and Northern Area Task Forces and Regional Unmet Needs Tables, and Non-Profit Builders Coalition. He also served as Treasurer of the Hudson and Union County Long Term Recovery Groups.

Keith also serves as Chairperson of the New Jersey State Voluntary Organizations Active in Disaster (NJVOAD). Since May 2016, he has served as a member of the Board of Directors for National Voluntary Organizations Active in Disaster. He has most recently been working in support of long term recovery efforts in Texas. Retired from a longtime career in Emergency Services with the United States Department of Defense, Keith has always been active in community and church affairs, serving in a variety of leadership positions.

Engaging People with Disabilities and Access & Functional Needs in Preparedness, Response & Recovery – Room C

This panel will explore methods to engage people with disabilities and access & functional needs in planning and preparedness to improve readiness and result in better outcomes in response and recovery. Recommended for ALL.

Kelly Boyd is an Access & Functional Needs Planner for the NJ Office of Emergency Management and serves as a Co-Chair of the NJ Group for Access and Integration Needs in Emergencies & Disasters (NJGAINED). Previously, she served as the AmeriCorps Program Officer for the New Jersey Commission on National & Community Service and the Disaster & Disability Services Coordinator for the NJ Governor's Office of Volunteerism. Kelly was also a disaster reservist for FEMA Region 2, an Emergency Management Specialist at the NJ Division of Developmental Disabilities, and an Emergency Preparedness Contractor for Arc Mercer.



Joseph Geleta currently serves as the Director of Emergency Management for the NJ Department of Human Services. He is directly responsible for emergency management activities associated with the Department's 9 facilities and 12,000 employees. He serves as the State of New Jersey's Mass Care (Sheltering/Feeding) lead during disaster response operations. He retired from the NJ State Police after 30 years of service and was leading New Jersey's Hurricane Sandy recovery effort along with FEMA Colleagues. Upon his retirement, Joe served as the Executive Director of the NJ211 Partnership.

Lauri Gill is a Subject Matter Expert in Mass Care (Emergency Support Function #6) activities. She has been employed by the American Red Cross since 2007 in various positions and has been the Regional Mass Care Manager since 2014. She concurrently assists with coordinating the Red Cross' Training and Exercise Program. Lauri is passionate when it comes to engaging partners through training to enable collaborative work in sheltering and other Mass Care activities. She has been requested/deployed to several Red Cross disaster responses nationally with the Red Cross, has been an active member of the States Sheltering Task Force since its inception and is a founding member of the Sussex/Warren COAD.



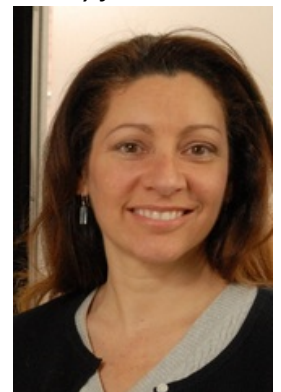
Carole Tonks has over 20 years' experience in the disability community. She has served for the past 10 years as the Executive Director for the Alliance Center for Independence (ACI) in Edison, New Jersey. ACI is a center for independent living serving individuals in Middlesex, Somerset and Union counties. Carole has been involved in emergency preparedness since 2011

Prior to ACI, Carole worked for 13 years at the NJ Council on Developmental Disabilities, where she was the coordinator of their statewide advocacy project. She is a member of the Statewide Advisory Committee for the United States Commission on Civil Rights. Carole became involved in disability rights after her son was born with Autism. She lives in Brick, NJ with her husband Jerry and their son Jason.

Incorporating Resiliency Strategies in Response & Recovery – Room D

This facilitated discussion will explore ideas and collaborative solutions needed to incorporate resiliency strategies into response and recovery practices. Recommended for government and non-profit entities involved in recovery functions.

Mariana Leckner, Ph.D., CFM has 30 years of experience in hazard research, assessment, and planning, and has worked in the field of emergency management operations, planning, outreach and training since 1996. She specializes in preparedness, response, and mitigation planning, with technical expertise in atmospheric and hydrologic hazards and emergency operations center management. She has worked with the American Red Cross as a State Resource Management Specialist, the New Jersey Office of Emergency Management as a planner engaged in all-hazards planning, training, outreach, and response capacities, and has taught college-level courses in geography, environmental hazards and emergency management, as well as FEMA courses in emergency management.



Presently, Mariana provides consulting services to municipal, county, State and private sector clients. She is a Certified Floodplain Manager, and is a member of the New Jersey Climate Adaptation Alliance Advisory Committee, the New Jersey Association for Floodplain Management, the American Meteorological Society, Association of American Geographers, and the International Association of Emergency Managers. Mariana has bachelor's and master's degrees from the University of Virginia and completed her doctorate in Geography at Rutgers University.



Mark Mauriello began his career with the New Jersey Department of Environmental Protection (DEP) in May 1980, after earning a bachelor's degree in Geology from Middlebury College in Vermont. He held positions as a Shoreline Mapping Specialist Division of Coastal Resources Director, Assistant Commissioner for Land Use Management, then Commissioner of the DEP until his retirement from DEP in January 2010.

Over the years Mark has served in many capacities, including Regional Director of the Association of State Floodplain Managers, Chair of the Association of State Floodplain Managers Coastal Committee from 1988 until 2007, Vice-Chair of the Regional Greenhouse Gas Initiative, member of the NJ State Planning Commission, and founding member of the New Jersey Association for Floodplain Management. He has also served on many federal committees and working groups, including the FEMA's Hurricane Sandy Mitigation Assessment Team,

National Hurricane Program Task Force, as a Community Rating System Technical Advisor, and USEPA's Coastal Elevation and Sea Level Rise Advisory Committee. Upon retiring from DEP in January 2010, he formed Mark Mauriello Consulting, LLC, specializing in coastal zone management, floodplain management, land use regulation and regulatory compliance. In March, 2010, Mark accepted a position as Director of Environmental Affairs and Planning with Edgewood Properties/M&M Realty Partners. In this capacity, he is responsible for overseeing the company's environmental programs and planning initiatives, and serves as an advisor on regulatory issues and property acquisitions.

Something for Everyone - Whole Community Volunteer Approach – Room A

This esteemed panel will share their insights and recommendations for engaging volunteers from all backgrounds in preparedness, response and recovery. Recommended for ALL.

Michele Epifani has served as Executive Director at the Volunteer Center of South Jersey since 2015. Her business methodologies are carefully selected with her belief that a clear roadmap and lean operational processes are critical success factors for any organization's sustainability and growth, most especially in the non-profit sector. As Executive Director, Michele oversees all areas of VCSJ, whose core mission is to connect volunteers, empower nonprofits to change lives and improve our community. She has initiated a rebranding effort to raise awareness and become a true community partner in the seven counties of South Jersey that VCSJ serves. Collaboration is another major component of her playbook, finding ways to complement the other volunteer organizations in the State. Most recently, VCSJ became a sub-grantee of the Volunteer Generation Fund, through NJ's Governors' Office of Volunteerism and the Community for National Service Corps.



Michele holds a BA in Liberal Studies: Political Science and Business from Rowan University and an AAS in Computer Science from Gloucester County College.



Rowena Madden is the Executive Director of the Governor's Office of Volunteerism and the New Jersey Commission on National and Community Service. Through the Commission, which is federally funded at \$4 million per year, 500 AmeriCorps members serve communities in the areas of education, human need, homeland security, and the environment. The Commission is also a partner in the administration of the federal Foster Grandparent Program in New Jersey. The Governor's Office of Volunteerism works with County Volunteer Centers to recruit, train, and recognize NJ's 1.5 million volunteers. The Office also administers the New Jersey Commission on American Indian Affairs.

Formerly, Rowena was Senior Policy Advisor to seven Commissioners of Human Services. She was the department's key grant developer and administrator of national research demonstrations on welfare reform, refugee programs, and national service. Her proposals generated over \$50 million in programs for New Jersey's children and families. Prior to coming to State government in 1975, she worked in a community center in rural Louisiana, serving a tri-racial community (African American, Cajun and Houma Indian) during desegregation of the schools.

Rowena is a graduate of Brandeis University and received her Master of Arts degree in History from the University of New Orleans. She was born in Trenton and lives in Hunterdon County with her husband, Martin, and many animals.

Araif Yusuff serves as the U.S Programs Coordinator for the Northeast Region of Islamic Relief USA and is a member of the organization's Disaster Response Team. He holds a Masters of Public Administration (MPA) degree from John Jay College of Criminal Justice - City University of New York (CUNY).



Who's at the Table - Building a Multi-Agency Resource Center for the Whole Community – Room E

This tabletop exercise provides practical information and tools to help COADs/VOADs not only establish a post-disaster "one-stop shop" but to determine who should be part of the COAD/VOAD during blue sky period so that valuable resources and information are cohesively pulled together to support their communities before they are needed. Recommended for COAD/VOAD members and Emergency Management Professionals



Carol Cohen currently serves as Executive Director for the American Red Cross Southern Shore service area, encompassing Atlantic, Cape May, Cumberland and Salem Counties and serving close to 600,000 residents. After 35 years in private industry, the first nine of which were spent at J.P. Morgan's prestigious headquarters at 23 Wall Street, Carol joined the Red Cross as a volunteer with the Jersey Coast Chapter in August 2005 in answer to Hurricane Katrina. In December of 2006 she was hired as a full-time employee to serve as the Lifeline Representative, a program she grew to be among the largest and most successful in the country. In 2009 she was asked to take over the chapter's Health & Safety program as Director, and to oversee that program throughout what was then the South Jersey Region.

In her tenure as ED, which began in September 2012, Carol was instrumental in re-establishing Red Cross presence throughout the service area, leading the chapter through Superstorm Sandy, and helping to reform the Tri-County COAD (Community Organizations Active in Disaster) following the unexpected death of its chairperson in 2014. She served on the Executive Board until April 2016, and now is a member of the COAD's Advisory Committee. In 2013, she was nominated by United Way as a candidate for Outstanding New Executive of the Year, and in 2015 was named as Humanitarian of the Year by the Spanish Community Center. In October 2017, The Chapel of Four Chaplains awarded her their Legion of Honor Humanitarian award, the only woman among 8 honorees throughout the State.

Ted Smith, originally from Connecticut, moved to New York City to attend Fordham University where he graduated with a degree in History and Peace and Justice Studies. After spending a couple of years working in homeless services in New York, he joined the New York City Fire Department as an Emergency Medical Technician from 1999 to 2004. He relocated to South Jersey, working with the University of Medicine and Dentistry as an EMT in Camden. In 2008 he began working in Mount Laurel for Mount Laurel EMS. In January of 2017, Ted became the Disaster Program Manager for Gloucester and Salem for the American Red Cross. In the last year, he has deployed to multiple large scale disaster operations around the country including Hurricane Harvey, the Northern California wildfires and the multiple blizzards in Massachusetts as well as manage smaller disasters here in New Jersey.



Plenary Presentation - 12:30 PM – 1:30 PM

Active Shooter: From Pathway to Violence to Road to Recovery

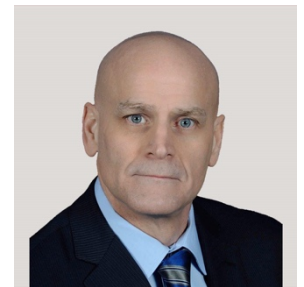
This featured presentation will offer an overview of the pathway to violence, review strategies to survive an active shooter incident, and explore the role of VOAD members and partners in supporting the road to recovery post-incident. This is a preview of future regional forums which will explore each of these critical areas with the goal of strengthening individual and organizational capabilities to prevent, mitigate, respond to and recover from active shooter incidents.



Janice Campbell is President and Co-Founder of the Tri-State Canine Response Team, a non-profit organization that was started in 2016. She is passionate about this organization which is devoted to providing certified and trained handler/dog teams for Animal Assisted Activities, Animal Assisted Therapy and Animal Assisted Crisis Response Teams. Janice and her organization provide emotional support, aid, and comfort to victims of disasters, catastrophes, and violence throughout the country. Her every action conveys a commitment to making a difference to children, families, neighborhoods, and communities that are in crisis.

Janice's diverse work experience includes 18 years working with the Mental Health Association in Southwestern New Jersey. She is a member of the Traumatic Loss Coalition and a Disaster Relief Crisis Counselor. When not working in the Mental Health field she is an instructor at Wonderdogs teaching Animal-Assisted Therapy and Therapy Dog classes where she is a Tester and Observer for Alliance of Therapy Dogs.

John Hunt serves as the Corporate Director of Security and Emergency Management for AtlantiCare Health System. He is a twenty-seven year veteran of the New Jersey State Police where he achieved the rank of Major. He operated as the Deputy Director of the New Jersey Office of Emergency Management where he served as a participant, observer, and director of over more than 30 exercises. John was responsible for overseeing the State Police Homeland Security strategy as the Commanding Officer of the Homeland Security – Special Operations Section. Since joining AtlantiCare John has achieved Active Shooter Instructor Certification as well as several certifications associated with his role as the Hospital Emergency Management Coordinator.



John has national and international experience as a keynote speaker including presentations at the Weapons of Mass Destruction Exercise in Israel, the Global Terrorism symposium in Belgium and multiple presentations in Washington regarding terrorism and active shooter. He is called upon frequently to assist with preparing, preventing, training and exercising in Homeland Security solutions. For the past 7 years, he has been providing presentations associated with hospital security including a focus on how best to prepare for and counter an active shooter event.



Megan Sullivan is the Deputy Director of the Disaster & Terrorism Branch of the Division of Mental Health and Addiction Services. She is a certified Disaster Response Crisis Counselor, trained in the FEMA and Red Cross models and is currently a part of the Division of Mental Health and Addictions' Disaster and Terrorism Branch which develops contingency planning for the public's mental health needs surrounding various types of emergencies. She serves on the Operations Board of the Disaster Response Crisis Counselor Certification and is one of the trainers for the DRCC curriculum. She has deployed to Louisiana for hurricane relief and to the United States Virgin Islands with the New Jersey Emergency Medical Services taskforce after Hurricanes Irma and Maria.

Megan is a graduate of Villanova University and holds a Masters of Education in Counseling Psychology from Rutgers, the State University of New Jersey. She holds licenses as a Professional Counselor and Clinical Alcohol and Drug Counselor. She has also trained in marital and family counseling at The Center for Family, Community and Social Justice in Princeton, NJ.

Breakout Sessions – 1:45 PM -3:00 PM

2018 Threat Assessment & Mitigation Strategies – Room E

This presentation will provide an overview of New Jersey's Office of Homeland Security & Preparedness 2018 Threat Assessment, as well as ways individuals can help their communities mitigate threats. Recommended for ALL.

Allysa Potter joined NJOHSP in 2007 and is currently a Senior Intelligence Analyst assigned to the Analysis Bureau. Her responsibilities include monitoring and analyzing terror-related information for the development and dissemination of strategic intelligence for the State of New Jersey. Her subject matter expertise relates to foreign terrorist groups in the Arabian Peninsula and single-issue domestic terrorist groups. Allysa also specializes in Open Source Intelligence collection. Since 2007, she has co-authored the New Jersey Office of Homeland Security and Preparedness Annual Terrorism Threat Assessment.

Building Capacity and Funding to Support Preparedness, Response & Recovery – Room F

In this post-Sandy era, how can we continue to build organizational and community capacity to ensure better response to and recovery from future disasters? This workshop will explore methodologies to engage and inform existing and potential funders to invest in building capacity of organizations to better withstand future disasters and proactively support preparedness, response and recovery efforts. Recommended for non-profit entities.



Janet Sharma served as CEO of the Volunteer Center of Bergen County for 21 years, in which capacity she chaired the Bergen County VOAD (Voluntary Organizations Active in Disaster) and Long Term Recovery Committee, which raised and distributed more than \$10 million to help residents recover from Hurricane Sandy.

Janet is currently coordinator of Age-Friendly Englewood, a coalition of 50+ organizations working together to help residents age-in-place with dignity and independence. She has received the "Woman of Distinction" award from Senator Robert Menendez, and her civic leadership has been recognized by the Meadowlands Regional Chamber, WCBS-880, the Girl Scout Council of Northern New Jersey, YWCA and other organizations. She serves on the N.J. Governor's Advisory Council on Volunteerism, Bergen County Human Relations Commission, and the Advisory Boards of the Russ Berrie Awards for Making a Difference and the Sax Founders Award. She's also a member of the Flat Rock Brook Nature Association Board and is president-elect of Englewood Rotary. She resides in Cresskill.

Tess Tomasi serves as the Information & Assistance/Care Management Supervisor for the Bergen County Division of Senior Services. She started her career in service in 1995 in San Francisco. Since then, she has worked in homeless shelters, housing authorities, affordable housing nonprofits, and other social service agencies.

Immediately after Hurricane Sandy, Tess became the Project Manager for the Bergen County VOAD Long-Term Recovery Committee (LTRC), where she led an outstanding professional staff of 13 and a legion of volunteers to provide recovery assistance to residents affected by the storm. She developed a single-point-of-entry system headquartered at the Recovery Information Center in Moonachie. The system provided the residents with streamlined access to the resources of the 60+ LTRC member organizations including case management, home repair, and financial assistance. Tess holds a Bachelor's Degree in Literature from the University of San Francisco and a Master's Degree in Public Administration from Fairleigh Dickinson University.



Congregate Sheltering for the Whole Community – Room D

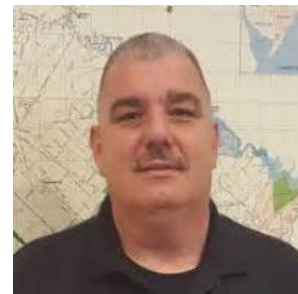
Learn how NJ is engaging and embracing the whole community in planning for congregate shelter needs for future disasters. Recommended for ALL.



Jamie Bodrog-Powell is an Emergency Planner with New Jersey Department of Human Services, Office of Emergency Management. She serves as a Co-Chairperson for the New Jersey Shelter Task Force's Disabilities Access and Functional Needs Working Group and serves as a representative to NJ GAINED.

Jamie is currently working towards her BS in Homeland Security and Emergency Preparedness at Thomas Edison State University.

Ed Conover currently serves as the Deputy Director of Emergency Management for the New Jersey Department of Human Services. His primary tasks include the development of plans to support evacuees in the event of a catastrophic event through the various Mass Care functions. Ed has also served as the Deputy Director of the Atlantic County Office of Emergency Preparedness and has over 20 years as a career Emergency Manager and over 30 years in Emergency Services.



Chris Dempsey, American Red Cross



Joseph Geleta currently serves as the Director of Emergency Management for the NJ Department of Human Services. He is directly responsible for emergency management activities associated with the Department's 9 facilities and 12,000 employees. He serves as the State of New Jersey's Mass Care (Sheltering/Feeding) lead during disaster response operations. He retired from the NJ State Police after 30 years of service and was leading New Jersey's Hurricane Sandy recovery effort along with FEMA Colleagues. Upon his retirement, Joe served as the Executive Director of the NJ211 Partnership.

Disability Inclusion: Understanding & Engaging the Disability Community – Room C

Increase your understanding, sensitivity and awareness when it comes to engaging people who have disabilities in volunteerism, national and community service, emergency preparedness and response activities. Recommended for ALL.



Kelly Boyd is an Access & Functional Needs Planner for the NJ Office of Emergency Management and serves as a Co-Chair of the NJ Group for Access and Integration Needs in Emergencies & Disasters (NJGAINED). Previously, she served as the AmeriCorps Program Officer for the New Jersey Commission on National & Community Service and the Disaster & Disability Services Coordinator for the NJ Governor's Office of Volunteerism. Kelly was also a disaster reservist for FEMA Region 2, an Emergency Management Specialist at the NJ Division of Developmental Disabilities, and an Emergency Preparedness Contractor for Arc Mercer.

Donna Teel, Program Development Specialist/NJ FGP Director for the NJ Office of Volunteerism and Community Service

Rebuilding Right the First Time – Room A

This facilitated discussion will explore multi-disciplinary solutions (ie. Construction, DCM) to the challenges experienced while rebuilding from Sandy and other recent disasters.

Melissa Hruska, Catholic Charities

Sara Jenkins is a graduate of Georgian Court University (Class of 2009) with a Bachelors in Social Work. She furthered her education at Monmouth University (Class of 2012) earning a Masters in Social Work with a concentration in International and Community Development. Additionally, she is certified in the state of New Jersey as a School Social Worker.



Soon following the completion of her Masters program, SuperStorm Sandy heavily impacted New Jersey. Sara took a position with the United Way of Monmouth County as the Program Coordinator for Rebuild Monmouth, organizing donations and volunteers during the relief phase. As the rebuild efforts continued, her position evolved into the Case Management Coordinator for the Monmouth County Long Term Recovery Group (LTRG). Working with a variety of case management agencies, Sara assisted in organizing the unmet needs presentation process. She then went on to work for The Salvation Army New Jersey Division as their Disaster Case Management Supervisor, while also taking on the role of Case Management Chair for the Monmouth LTRG. Once the recovery efforts concluded, a new position came to fruition within The Salvation Army as a Regional Coordinator for Pathway of Hope. Sara was instrumental in the launch of this statewide initiative to end generational poverty, and continues to work in this role today.



Kevin McGee is Executive Director of NJ Recovery, SBP, Inc. Prior to his role as the Executive Director of the SBP New Jersey Operation, Kevin worked as a mental health professional in Monmouth County, NJ for 10 years, helping to meet the complex needs of adolescents and their families in crisis.

Committed to serving disaster survivors still recovering from Superstorm Sandy now over 5 years since the storm, Kevin and the SBP team are determined to find new and creative ways to meet the housing needs of communities all across the Jersey Shore.

Vicki Phillips, Mental Health Association of New Jersey